



EPGC inFOREmer

April 1, 2017

Web Site: www.elpasogolfclub.com
Golf Shop email: golfclub@fairpoint.net
Lane's email: golfclubgm@fairpoint.net



Are you planning a meeting, luncheon, or party? Save yourself the time and effort of cooking and cleaning. Host your next party: graduation, birthday, office, card, shower, reunion, bachelor, or engagement—here at the El Paso Golf Club.

Please speak with Lane for details.



April Events

Wednesday, April 5 - Full Restaurant Menu Starts

Monday, April 17 - Men's League Pre-Season Meeting, 5:30pm

Saturday, April 22 - EPGHS Draw Down, 6:15pm - **Restaurant Closed at 5:00pm**

Monday, April 24 - McLean County Seniors, tee times 7:04-11:04am

Tuesday, April 25 - McLean County Seniors, tee times 7:04-11:04am

Tuesday, April 25 - 18 Hole Morning Women's League Lunch & Meeting 12:00pm & Golf Scramble 1:00pm

Tuesday, April 25 - "Ladies of the Evening" League Meeting, 5:30pm

Friday, April 28 - ISU Construction Management Outing, 10:00am Shotgun, 144 Golfers, course closed 10:00-3:00pm

Saturday, May 6 & Sunday, May 7 - Permanent Weekend Tee Times Start — Get your group ready!!!

Mizuno Custom Club Fitting

Sign up to get custom fit for a new set of irons on Saturday, May 13. Fitting times start at 9:00 and go to 2:00 (every half hour). The sign up poster is on the golf shop bulletin board. Call Steve to reserve your fitting time. The Mizuno sales rep will also be here to help with fittings and answer any of your questions.

Modified April Restaurant Schedule

Monday selected menu all day until? Tuesday no dinner menu until May.

Salad Bar will be available on weekends only (Fri. & Sat.) in April.

Sunday menu will close @ 6:00pm in April. Bar may be open later.

Easter Brunch is Sunday, April 16th.

No regular breakfast after 9:00am. Small golfers buffet only.

Nothing will be served after 2:00pm.

RESTAURANT NEWS

Full Breakfast, Lunch & Dinner menu starts Wednesday, April 5th.

Ladies 18 Hole Morning League

Any EPGC lady member that is interested in joining this league please contact Steve. The league begins on Tuesday, May 2 and runs through Tuesday, September 26. There are different plays of the day each Tuesday. Ladies are paired with different players each week as best as we can. There are 3 flights based on handicap and events are Gross, Net & Play of the Day. Play on Tuesday is an 8:00am shotgun start (groups start on different holes). Please call Steve if you are interested at: (309) 527-5225 ext. 1. **On Tuesday, April 25th there is a meeting at 12:00 & scramble at 1:00pm.**

The league sign up form is located on page 3 of this newsletter. Send your completed form and payment to Annette Swichtenberg, league treasurer by Tuesday, April 18th.

Ladies 9 Hole Morning League

Whether you are a beginning lady golfer or an established lady golfer and would like to play 9 holes on Tuesday morning, this would be a fun league to join. There are no league dues to pay. This is just a fun social golf league.

Any lady that plays with this group on Tuesday MUST call the Golf Shop to sign up ahead of time. The Golf Shop needs to know how many 9 hole ladies to expect each Tuesday morning. Tee times start at approx. 9:00-9:15am.

Please contact Steve at (309) 527-5225 ext. 1 if you plan on being a part of the 9 Hole Tuesday Morning Ladies League or email Steve at: golfclub@fairpoint.net League begins Tuesday, May 2. Scramble on Tuesday, April 25 at 1:00pm.

Ladies 9 Hole Evening League

The "Ladies of the Evening" golf league mainly accommodates those ladies that work during the day and want to be a part of a golf league. The league begins Tuesday, May 2 and runs through Tuesday, August 29. The 1st tee is reserved from 3:30-6:00pm for league players, the 10th tee the last Tuesday of each month (tee times are not necessary). Please contact Steve at: (309) 527-5225 ext. 1 if you are interested in joining this league.

The league sign up form is located on page 4 of this newsletter. Please send completed form and payment to Donna Schad or drop it off in the Golf Shop. The first league night (May 2nd) will be a 4-lady scramble at 5:30pm.

Wednesday Couples League

The Wednesday morning couples league begins its season on May 3rd (9:00am) with a 4-person scramble. Scrambles are the preferred form of play each week. Different couples are paired together each week so everyone gets to play with different people. This is a very social league and a lot of fun. Last year we had 31 couples in the league and we hope more will join this year. This is becoming a very popular league.

The cost to join the league is \$15.00/couple which helps pay for the end of the year luncheon. The weekly scramble fee is \$2.00/couple and winners for Net score & Putts are paid out (sometimes Low Gross). Ten percent of the foursomes combined handicap is used to determine their Team Net score. After each round all the couples have lunch together in the club house and socialize.

Sign up in the Golf Shop to play and meet some great people each week.

2017 EPGC 18-HOLE WOMEN'S LEAGUE MEMBERSHIP FORM

Send membership form with the league dues **by April 18th** to:

Annette Swichtenberg, League Treasurer,

56 Ravenwood Circle

Bloomington, IL. 61704-8470

As voted by the membership at the September 2016 business meeting, the membership dues for 2017 will be \$20.00. Also, the 2017 Kickoff Meeting on Tuesday, April 25th will include lunch. The lunch will begin at 12:00 noon with the meeting to follow then a golf scramble. Lunch will cost \$8.00 per person. Please **circle** the appropriate response below.

YES I will attend the 18-Hole Women's League Kickoff Meeting and lunch on Tuesday, April 25th. A check totaling \$28.00 is enclosed for my 2017 league membership dues and for lunch.

YES I will attend the 18-Hole Women's League Kickoff Meeting on Tuesday, April 25th, but I am **NOT** interested in the lunch. A \$20.00 check for my 2017 league membership dues is enclosed.

NO I will **NOT** be able to attend the 18-Hole Women's League Kickoff Meeting. A \$20.00 check for my 2017 league membership dues is enclosed.

Please complete the following and return this form along with your membership dues.

Having all of your current information is important so we can keep our records up to date.

Name: _____

Street/Mailing Address: _____

City, State, Zip Code: _____

Phone #: () _____ E-mail Address: _____

If you have questions or know of someone who would like to join the league,
please feel free to call any of the following:

Nancy Beckman, League Chairperson, @ (309) 664-6252

Nancy Wilsey, League Secretary, @ (309) 527-3488

Annette Swichtenberg, League Treasurer, @ (309) 661-0240

2017 "LADIES of the EVENING" GOLF LEAGUE



A pre-season meeting will be held at 5:30pm Tuesday, April 25th in the clubhouse, for all interested EPGC lady golfers.

Our league begins the 2017 season on Tuesday, May 2nd, with a scramble (5:30 shotgun).

Please make your check for \$15.00 payable to: Ladies of the Evening.

Just detach the form below and return with your payment to:

Donna Schad (treasurer)
116 Greenleaf Drive
Bloomington, IL. 61704

OR Drop off in the Golf Shop

PLEASE fill out this form **completely** so we can keep our records up to date.

Cut > - - - - - < Cut

Name: _____

Address: _____

City: _____ Zip: _____

Phone - H: _____ W: _____ C: _____

Email address: _____

Please declare your primary league for Inter-League play*

9 hole _____ or 18 hole _____

It's time to think about meeting your fellow golf members and have a little fun!
Register for the "Ladies of the Evening" Golf League!

EPGC Men's Golf League



It's time to think about meeting your fellow golf members and have a little fun.

Register for the EPGC Men's Golf League!



A pre-season meeting will be held at 5:30pm Monday, April 17th in the clubhouse, for all interested EPGC golf members.

The registration deadline will be Monday, April 24th, to allow for team selection.

All A & B players will play from the blue tees and all C, D & E players will play from the white tees. This will be for all matches.

The men's league begins the 2017 season on Monday, May 1st with a TEAM scramble on the front nine (5:00pm shotgun).

All league events on Monday are a 5:00pm shotgun start unless otherwise noted.

A \$50 registration fee must be submitted with your registration form if you are signing up as a regular.

The registration fee consists of league dues (\$20), tournament fees (\$15) and mid season & final night dinner fees (\$15).

Please make your check payable to: EPGC Men's League

The league will consist of an even number of 4 or 5 man teams. If the number of member registrations does not come out evenly, the full registration fee will be refunded to the excess members. Last years league members will have priority over new league members, otherwise, priority will be set by the date & time that the registration form and league fees are received in the Golf Shop.

Please detach the form below and return it to the Golf Shop by Monday, April 24th with your payment
PLEASE fill out this form completely so we can have your current information on file.

Cut > < Cut

Name: _____

Address: _____

City: _____ Zip: _____

Phone - H: _____ C: _____ W: _____

Email address: _____

Average score: _____ (If you do not have an established CDGA handicap)

Please select (circle one): REGULAR (include \$50 registration fee) OR Substitute



(Golf Shop Use Only)

Payment type: _____

Date/Time Received: ____/____/____ :____ Amount Paid: \$_____



EPGC inFOREmer

El Paso Golf Club, Inc.
2860 County Road 600 N
El Paso, IL. 61738-1743

Address Service Requested

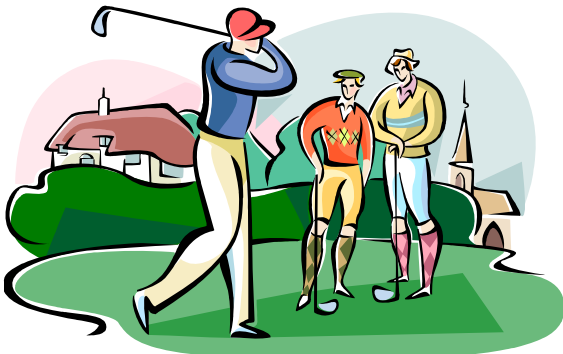
PRESORTED STANDARD

U.S. POSTAGE

PAID

PERMIT NO. 58

EL PASO, IL.



Friendly Golfers Play Here

Upcoming Events



Wednesday, April 5 - Restaurant Re-opens for the season

Sunday, April 16 - Easter Brunch, serving from 10:00am-2:00pm

Monday, April 17 - Men's League Pre-Season Meeting, 5:30pm

Saturday, April 22 - Evening Restaurant Closed at 5:00pm for EPGHS Draw Down

Members are welcome to buy a ticket (see Stacy Unzicker or Jim Bagnell)

Tuesday, April 25 - Ladies Morning League Luncheon & Meeting 12:00pm, Scramble 1:00pm

Tuesday, April 25 - Ladies of the Evening Meeting, 5:30pm

Monday, May 1 - Men's League opening Team Scramble 5:00pm

Tuesday, May 2 - Women's Day Begins

Wednesday, May 3 - Couples League Begins

Thursday, May 4 - Men's Play Day Begins

Saturday, May 6 & Sunday, May 7 - Permanent Tee Times Begin